

Journal Pre-proofs

Original article

Melatonin relieves diabetic complications and regenerates pancreatic beta cells by the reduction in NF-kB expression in streptozotocin induced diabetic rats Melatonin: anti-diabetic drug

Alyaa Farid, Passant Moussa, Manar Youssef, Merna Haytham, Ali Shamy, Gehan Safwat

PII: S1319-562X(22)00229-7
DOI: <https://doi.org/10.1016/j.sjbs.2022.103313>
Reference: SJBS 103313

To appear in: *Saudi Journal of Biological Sciences*

Received Date: 14 September 2021
Revised Date: 18 April 2022
Accepted Date: 18 May 2022

Please cite this article as: A. Farid, P. Moussa, M. Youssef, M. Haytham, A. Shamy, G. Safwat, Melatonin relieves diabetic complications and regenerates pancreatic beta cells by the reduction in NF-kB expression in streptozotocin induced diabetic rats Melatonin: anti-diabetic drug, *Saudi Journal of Biological Sciences* (2022), doi: <https://doi.org/10.1016/j.sjbs.2022.103313>

This is a PDF file of an article that has undergone enhancements after acceptance, such as the addition of a cover page and metadata, and formatting for readability, but it is not yet the definitive version of record. This version will undergo additional copyediting, typesetting and review before it is published in its final form, but we are providing this version to give early visibility of the article. Please note that, during the production process, errors may be discovered which could affect the content, and all legal disclaimers that apply to the journal pertain.

© 2022 The Author(s). Published by Elsevier B.V. on behalf of King Saud University.



**Melatonin relieves diabetic complications and regenerates pancreatic beta cells
by the reduction in NF-kB expression in streptozotocin induced diabetic rats**

Melatonin: anti-diabetic drug

**Alyaa Farid^{a*}, Passant Moussa^b, Manar Youssef^b, Merna Haytham^b, Ali
Shamy^b, Gehan Safwat^b**

^a **Zoology Dep., Faculty of Science, Cairo University, Giza, Egypt**

^b **Faculty of Biotechnology, October University for Modern Sciences and Arts
(MSA), Giza, Egypt**

***Correspondence: alyaafarid@cu.edu.eg**

Zoology Department, Faculty of Science, Cairo University

Tel. +201001089969

ORCID iD: <https://orcid.org/0000-0003-0706-347X>

**Melatonin relieves diabetic complications and regenerates pancreatic beta cells
by the reduction in NF-kB expression in streptozotocin induced diabetic rats**

Abstract:

Melatonin, a pleiotropic hormone, has many regulatory effects on the circadian and seasonal rhythms, sleep and body immune system. It is used in the treatment of blind circadian rhythm sleep disorders, delayed sleep phase and insomnia. It is a potent antioxidant, anti-inflammatory, free radical scavenger, helpful in fighting infectious disease and cancer treatment. Decreased level of circulating melatonin was associated with an increased blood glucose level, losing the anti-oxidant protection and anti-inflammatory responses. We aimed to evaluate the effect of melatonin administration, in streptozotocin (STZ) induced diabetic rats, on blood glucose level and pancreatic beta (β) cells. Diabetes mellitus was induced in Sprague dawley male rats by the intravenous (i.v) injection of 65 mg/kg of STZ. Diabetic rats received melatonin at a dose of 10 mg/kg daily for 8 weeks by oral routes. The results showed, after 8 weeks of melatonin administration, a reduction in: 1- fasting blood glucose (FBG) and fructosamine (FTA) levels, 2- kidney and liver function parameters, 3- levels of serum triglycerides, cholesterol and LDL-C, 4- malondialdehyde (MDA), 5- NF- κ B expression in treated group, 6- pro-inflammatory cytokines (IL-1 β and IL-12) and immunoglobulin (IgA, IgE and IgG). Furthermore, an elevation in insulin secretion was noticed in melatonin treated group that indicated beta cells regeneration. Therefore, melatonin administration, in STZ induced diabetic rats; reduced hyperglycemia, hyperlipidemia and oxidative stress. Melatonin acted as an anti-inflammatory agent that reduced pro-inflammatory cytokines (IL-1 β and IL-12) and oxidative stress biomarkers (MDA). Melatonin succeeded in protecting β cells under severe inflammatory situations, which was apparent by the regeneration of islets of

Langerhans in treated diabetic rats. Moreover, these results can open a gate for diabetes management and treatment.

Key-words: β -cells; Diabetes mellitus; IL-1 β ; IL-12; inflammation.

1. Introduction

Melatonin (5-methoxy-N-acetyltryptamine), a tryptophan indolic molecule, is a hormone that is secreted from the pineal gland with a daily rhythm. Where, its secretion increases in darkness and hence it is named as the darkness hormone. Several researches demonstrated the relation among melatonin, insulin secretion and glucose homeostasis (Heo *et al.*, 2018; Oliveira *et al.*, 2018; Xu *et al.*, 2019). Yavuz *et al.* (2003) reported a reduction in malondialdehyde (MDA) and an elevation in glutathione peroxidase (GPx) activity after melatonin administration in diabetic rats; in addition to the preservation of integrity of pancreatic beta cells. The results of Klepac *et al.* (2006) proofed the scavenging effects of melatonin and reported the reduction in oxidative stress after 24 h of its administration in diabetic rats. Also, Hajam and Rai (2020) showed that melatonin revived the changes in biochemical and haematological parameters in diabetic rats. Moreover, Hajam *et al.* (2021) administrated diabetic rats with external melatonin in addition to insulin; and reported an enhancement in renal functions. Patients with diabetes showed low level of serum melatonin and an upregulated mRNA expression of membrane melatonin receptors (Peschke *et al.*, 2007). Diabetes occurrence was linked to the polymorphisms in melatonin receptor genes (Zhang *et al.* 2020). Also, patients with type I diabetes (T1DM), with mean blood glucose level >154mg/dl, had less urinary melatonin than healthy ones (Amaral *et al.*, 2014). Another study showed that sleep restriction, which result in low melatonin secretion, in patients with T1DM weaken insulin sensitivity and disrupted glycemic control on the next day (Donga *et al.*, 2010). Melatonin is safe

when used as a supplement (Xie *et al.*, 2017), easily absorbed via any administration route and can pass through all morphophysiological barriers as blood brain barrier and placenta (Dong *et al.*, 2016). Moreover, Kanter *et al.* (2006) showed that melatonin administration decreased fasting glucose level and slightly increased insulin level; the authors retained these to the action of melatonin on pancreatic beta (β) cells and stimulation of insulin secretion. Also, Ahmad Hajam *et al.* (2018) showed the recovery of pancreas of STZ diabetic rats, treated with melatonin, which in turn regulated the pancreas's function.

T1DM is considered as an autoimmune disease in which the destruction of pancreatic β cells by patient's immune system occurs, resulting in a reduction of insulin production and an elevation of blood glucose level (Saberzadeh-Ardestani *et al.*, 2018). Pancreatic histopathological features of this type of diabetes include a decrease in β cell mass and mononuclear cells infiltration that is known as insulinitis. Insulin administration is the traditional treatment to avoid hyperglycemia and diabetic ketoacidosis. Atkinson *et al.* (2014) reported that 10 to 20% of the β cells continue to function at the time of diagnosis.

Many researchers has induced T1DM in rodents by a single STZ injection (Lenzen, 2008; Yin *et al.*, 2006; Furman, 2015; Wu *et al.*, 2015). STZ, an antibiotic synthesized by *Streptomyces achromogens*, is composed of deoxyglucose molecule connected to a methylnitrosourea molecule, which is responsible for its cytotoxicity; while the glucose molecule targets STZ to pancreatic β cells through the glucose transporter 2 (GLUT2) receptor (Lenzen, 2008). Because GLUT2 is found in the kidney and liver to a lower scale, excessive dosages of STZ might affect kidney and liver functions (Bouwens and Rومان, 2005). STZ is fastly digested in the liver and excreted rapidly by the kidney; as a result, STZ has a very short half-life (15

min in the serum after its injection) (Eleazu *et al.*, 2013) and its cytotoxic effect to the kidney and liver can be ignored (Tesch and Allen, 2007). Therefore, any functional deterioration of the kidney and liver is related to the consequences of diabetic hyperglycemia and not to the STZ effect (Wu *et al.*, 2015). Accordingly, STZ induced T1DM animal model is a deep-rooted and widely used method for studying diabetes development and consequences. Although the STZ induced T1DM animal model is not in any way comparable to that in human, the single STZ injection model remains useful in studying diabetic glucotoxicity-induced β cell derangement due to its low cost, saving time, and easy methodology.

Our model to induce Type I diabetes in rats included the intravenous (i.v) injection of 65 mg/kg of STZ. STZ led to the destruction of pancreatic β cells inducing hyperglycemia, insulin deficiency, thirsty and an increase in urination, all of that were features of T1DM. Therefore, the present study was designed to: 1- test the possibility that melatonin can regenerate pancreatic β cells and increase insulin sensitivity, 2- apply immunological (cytokines and immunoglobulins) and immunohistochemical (for NF- κ B and insulin) examination for the explanation of the melatonin action on pancreas, 3- study the effect of melatonin administration on metabolic abnormalities associated with diabetes like oxidative stress, hyperglycemia, abnormal lipid profile, altered kidney and liver function. This was performed on STZ diabetic rats; where melatonin was orally administrated, after the induction of hyperglycemia, at a dose of 10 mg/kg daily for 8 weeks.

2. Materials and Methods:

2.1 Chemicals

STZ (S0130), 2-deoxy-2(3-methyl-3-nitrosoureido)-D-glucopyranose, and melatonin (M5250) was purchased from Sigma Company, USA. 50 mM sodium citrate buffer with pH 4.5 (Fisher, USA) was prepared just before use.

2.2 Animals

Sprague dawley male rats (10 weeks old; weighting; 170-220g) were purchased from National Organization for Drug Control and Research (NODCAR, Cairo, Egypt). On arrival, rats were housed in conventional cages for one week before the experiment for acclimatization. Rats were maintained at controlled temperature ($21\pm 2^{\circ}\text{C}$) and on a 12 hour dark–light cycle. Rats received standard pellets, containing all nutritive elements. Drinking water and food were provided *ad libitum*. All the experimental procedures were performed according to the international care and use of laboratory animals' guidelines; and were approved by the Institutional Animal Care and Use Committee (CU-IACUC), Cairo University, Egypt (CU 1 F 7 20).

2.3 Diabetes induction

On the first experimental day, all rats were fasted for 6-8 hours prior to STZ administration. 32.5 mg of STZ was dissolved in 50mM sodium citrate buffer to a final concentration of 32.5 mg/ml. Rats were i.v. injected by the prepared STZ solution at 65 mg/kg (2.0 ml/kg) according to Furman (2015). Control group was i.v. injected with citrate buffer only. Rats were administrated normal food and 10% sucrose water in the first day, only, of STZ administration. On the 10th day, all rats were fasted for 6-8 hours and blood samples from tail vein were collected for measuring fasting blood glucose (FBG) level. Rats with FBG level $>150\text{mg/dl}$ in comparison to control group were considered diabetic. Serum fructosamine (FTA)

was determined at the end of experiment, to measure average blood glucose level over the past 3 weeks, using Rat FTA ELISA Kit (MBS2601586, MyBioSource, USA).

2.4 Experimental design

Forty Sprague dawley male rats were divided equally into four groups. Group I: healthy control rats that received sodium citrate buffer only and vehicle (6% alcohol (w/v) aqueous solution), group II: melatonin administrated non diabetic control rats, group III: STZ diabetic rats that received vehicle only and group IV: melatonin treated STZ diabetic rats. Melatonin was dissolved in 6% alcohol solution and orally administrated at 10 mg/kg of body weight daily after induction of hyperglycemia for 8 weeks between 5-7 pm daily.

2.5 Oral glucose tolerance test (OGTT)

Rats were fasted for 6 h, then 2 gm/kg of glucose was orally administrated as a bolus at 9 am. FBG was monitored at 0, 30, 60, 90 and 120 min after receiving glucose. Blood samples were taken from the rats' tail tip using 27G needle according to Pedro *et al.* (2020); where small blood drop (less than 5 μ l) was positioned on a glucose strip in the glucometer.

2.6 Samples collection

Animals were terminally anesthetized with 80 mg/kg pentobarbital, at the end of the study; where blood samples were collected through heart puncture using 19G needle according to Parasuraman *et al.* (2010). This method is recommended to collect a high-quality single large blood amount from the animal. Blood was allowed to clot at room temperature followed by centrifugation. Serum was divided into aliquots and stored at -20°C. Organs (liver, kidney and pancreas) were also collected from different experimental groups for histopathological and immunohistochemical examination.

2.7 Biochemical analysis

Serum insulin was measured by Insulin Rat ELISA Kit (Invitrogen ERINS, Thermo Fisher, USA). Serum and liver cholesterol and triglycerides were measured by Cholesterol Assay Kit - HDL and LDL/VLDL (ab65390, Abcam, UK) and Serum Triglyceride Assay Kit (STG-1-NC, ZenBio, USA). Liver function enzymes were determined by Rat ALT ELISA Kit (ab234579, Abcam, UK) and Rat AST ELISA Kit (MBS264975, MyBioSource, USA). Kidney function enzymes were measured by rat urea ELISA kit (MBS2600001, MyBioSource, USA) and rat creatinine ELISA kit (MBS007289, MyBioSource, USA). Serum Malondialdehyde (MDA) was determined by rat MDA ELISA Kit (MBS268427, MyBioSource, USA). Superoxide dismutase (SOD) and glutathione peroxidase (GPx) activity was determined by rat SOD ELISA Kit (MBS266897, MyBioSource, USA) and rat GPx ELISA kit (MBS727547, MyBioSource, USA). Bio-Rad protein assay was used to measure total protein concentration in tissue homogenates.

2.8 Immunological analysis

Serum interleukin (IL)-1 β and IL-12 levels were determined by Rat IL-1 β ELISA Kit (MBS843359, MyBioSource, USA) and Rat IL-12 ELISA Kit (MBS2507061, MyBioSource, USA). Serum immunoglobulin (Ig) levels were determined by Rat IgG ELISA Kit (ab189578, Abcam, UK), Rat IgE ELISA Kit (CSB-E07984r, Cusabio, USA) and Rat IgA ELISA Kit (ab157735, Abcam, UK).

2.9 Histopathological studies

Organs from different experimental groups were fixed in 10% buffered formalin for 24 hours (Farid *et al.*, 2020). After fixation, tissues were washed in tap water; then dehydrated in ascending series of ethanol 70, 90, 95 and 100%, respectively, followed by clearing in xylene and embedding in paraffin wax at 55C°. Five sections (4 μ m

thickness) were cut from each tissue followed by staining with Hematoxylin and Eosin. Briefly, slides were put in xylene to dissolve the paraffin wax, then in absolute alcohol for two min, 95% alcohol for one min, 70% alcohol for one min. Slides were stained with hematoxylin for five min then washed in tap water. Excess stain was removed in acid alcohol for few seconds. Sections were stained with eosin for four to five min and washed in water then absolute alcohol (95%) and xylene. Sections were mounted by DPX.

2.10 Immunohistochemical staining

Formalin- fixed rat pancreatic sections, 4 μm , were deparaffinized, rehydrated and washed by phosphate buffered saline (PBS). 3% hydrogen peroxide in methanol was applied to pancreatic sections for blocking endogenous peroxidase activity followed by washing with PBS then blocking with 5% bovine serum albumin (BSA). Anti- (nuclear factor) NF-kB p65 antibody (phospho S536, ab86299, Abcam, UK) and monoclonal anti-insulin antibody (I2018, Sigma, USA) was used, individually, as a primary antibody for NF-kB and insulin in pancreatic sections, respectively. Sections were incubated for an hour, washed and incubated with HRP conjugated rabbit anti-rat IgG (ab6734, Abcam, UK) as a secondary antibody for two hours. 3, 3'-diaminobenzidine (DAB) was used to visualize the reaction until brown colour appears. Mayer's hematoxyline was used to counterstain pancreatic sections. Brown colour indicated positive reaction.

2.11 Statistical analysis

The results were evaluated by One Way ANOVA test and compared with Tukey test. Results were expressed as mean \pm SD and values were considered significant at $P < 0.05$.

3. Results:

3.1 Body weight and biochemical measurement

Table 1: the effect of melatonin administration in different experimental groups.

Parameters	Group I	Group II	Group III	Group IV
Body weight (gm)	220.12±0.53	225.65±2.41	145.50±0.32 ^a	201.53±0.54 ^{a,b}
Insulin (ng/ml)	3.01±1.25	3.91±0.47	0.91±1.96 ^a	2.8±3.21 ^b
FBG level (mg/dl)	89.08±0.65	80.11±4.21	244.18±1.23 ^a	91.93±0.25 ^b
FTA (μmol/L)	157.51±0.69	149.15±1.01	298.83±0.75 ^a	168.54±1.59 ^{a,b}
Liver function				
ALT (U/L)	25.07±1.65	26.01±2.01	45.56±2.50 ^a	29.44±0.65 ^b
AST (U/L)	21.69±0.87	20.31±1.54	35.55±1.80 ^a	23.85±0.43 ^a
Kidney function				
Urea (mg/dl)	37.64±0.59	35.74±5.40	83.53±1.43 ^a	39.65±1.92 ^{a,b}
Creatinine (mg/dl)	0.43±2.57	0.44±0.48	1.43±2.46 ^a	0.73±1.75 ^b

In each row, results were expressed as mean±SD, ^arepresents significance compared with the corresponding healthy control group I and ^brepresents significance compared with the corresponding diabetic group III ($P < 0.05$). Group I: healthy control rats, group II: melatonin administrated control rats, group III: non-treated STZ diabetic rats and group IV: melatonin treated STZ diabetic rats.

In all measured parameters, melatonin administration in control group II did not show any significant changes in comparison to healthy control group I. Non-treated diabetic control group III showed a significant reduction in body weight (145.50±0.32) in comparison to healthy control group I (220.12±0.53); melatonin administration in diabetic group IV improved body weight of rats to record a 201.53±0.54 gm. Insulin level of melatonin treated group IV (2.8±3.21) was significantly elevated than that of non-treated group III (0.91±1.96); and nearly equal to that of normal control (3.01±1.25).

Both of FBG and FTA levels increased significantly in non-treated diabetic group III, 244.18±1.23 and 298.83±0.75, respectively, in comparison to healthy controls (89.08±0.65 and 157.51±0.69 for FBG and FTA, respectively (table 1)). A significant decline in FBG level was observed in melatonin treated diabetic group IV (91.93±0.25) in comparison to non-treated diabetic group III (244.18±1.23). Also,

level of FTA in group IV decreased to reach 168.54 ± 1.59 after melatonin administration, which is comparable to that of healthy controls (157.51 ± 0.69).

Level of Urea (39.65 ± 1.92) in treated group IV decreased significantly when compared to that of diabetic group III (83.53 ± 1.43), but it was still higher than that of healthy control group I (37.64 ± 0.59). Creatinine level in diabetic group III (1.43 ± 2.46) was higher than those of healthy controls (0.43 ± 2.57) and treated group IV (0.73 ± 1.75).

Induction of diabetes in group III elevates liver enzymes ALT and AST to reach 45.56 ± 2.50 and 35.55 ± 1.80 , respectively, when compared to those of control group I (25.07 ± 1.65 and 21.69 ± 0.87 for ALT and AST, respectively). A significant reduction in ALT and AST level (29.44 ± 0.65 and 23.85 ± 0.43 , respectively) was observed in melatonin treated diabetic group IV in comparison to diabetes induced group III (table 1).

3.2 Serum and liver lipid profile

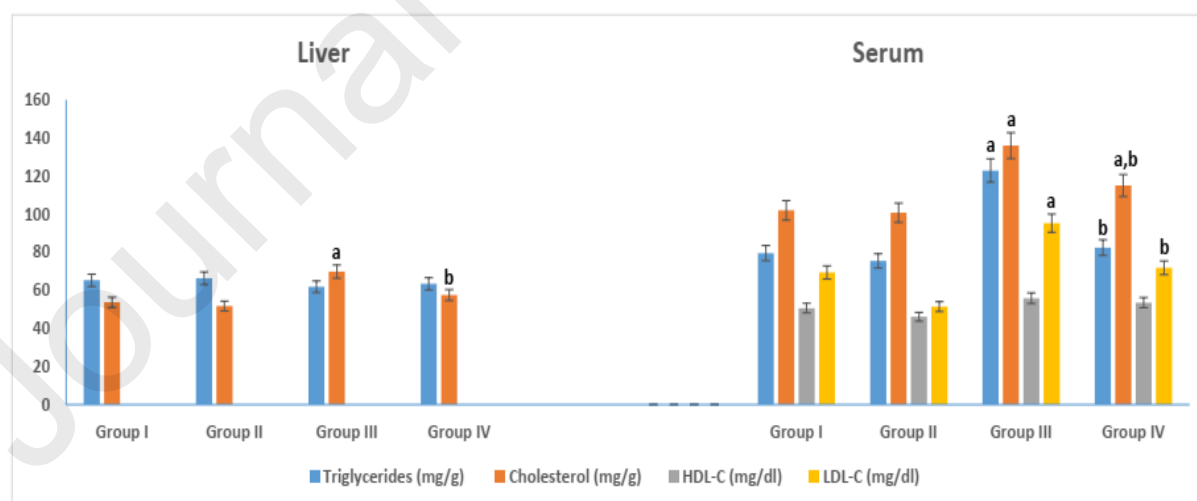


Figure 1: Serum and liver lipid profile in different experimental groups. ^arepresents significance compared with the corresponding healthy control group I and ^brepresents significance compared with the corresponding diabetic group III ($P < 0.05$). Group I: healthy control rats, group II: melatonin administrated control rats, group III: non-treated STZ diabetic rats and group IV: melatonin treated STZ diabetic rats.

Melatonin administration in group IV caused a significant reduction in serum triglycerides and cholesterol level, 82.45 ± 0.82 and 115.06 ± 0.76 , respectively, in comparison to non-treated diabetic group III (figure 1). However, group IV serum cholesterol level (115.06 ± 0.76) remains higher than that of healthy control (102.01 ± 0.93) in a significant way. No significance difference in serum HDL-C levels was noticed between different experimental groups. On the other hand, serum LDL-C level was significantly elevated in non-treated diabetic group III (95.24 ± 2.09) in comparison to healthy controls. Melatonin administration in group IV succeeded in decreasing LDL-C level to reach 71.89 ± 1.48 that was similar to healthy control's level (69.45 ± 2.49). Liver cholesterol in group III (69.84 ± 0.16) showed a significant elevation when compared to that (53.74 ± 1.57) of control group I. No significant change in liver triglycerides was observed.

3.3 Glucose Homeostasis

Figure (2) shows OGTT results before and after melatonin administration. No significant difference, before melatonin administration (week 0), was recorded between different groups at 0 min. After 30 min of glucose administration, group III and IV recorded a high blood glucose level than groups I and II. This behaviour continued till 120 min (Fig.2A). After 8 weeks of melatonin administration, a high blood glucose level in non- treated diabetic group III was observed at 0 till 120 min in comparison to control groups I and II. Melatonin treated diabetic group IV showed a blood glucose level resembled to that of control groups I and II (Fig. 2B). Table (2) showed values of area under curve (AUC). At 0 week, a significant elevation in AUC was noticed in group III (32550 ± 3547) in comparison to those of groups I and II (18495 ± 2530 and 17040 ± 1981 , respectively). No significant difference was observed

between diabetic group III and treated group IV. After 8 weeks, AUC value of both healthy control I and treated group IV were nearly the same.

Table 2: area under curve (AUC) for OGTT before and after 8 weeks of melatonin administration.

Time	Group I	Group II	Group III	Group IV
Week 0	18495±2530	17040±1981	32550±3547 ^a	31440±1245 ^a
Week 8	18735±6578	17010±2491	48825±4235 ^a	21045±1478 ^b

In each row, results are expressed as mean±SD, ^arepresents significance compared with the corresponding healthy control group I and ^brepresents significance compared with the corresponding diabetic group III ($P < 0.05$). Group I: healthy control rats, group II: melatonin administrated control rats, group III: non-treated STZ diabetic rats and group IV: melatonin treated STZ diabetic rats.

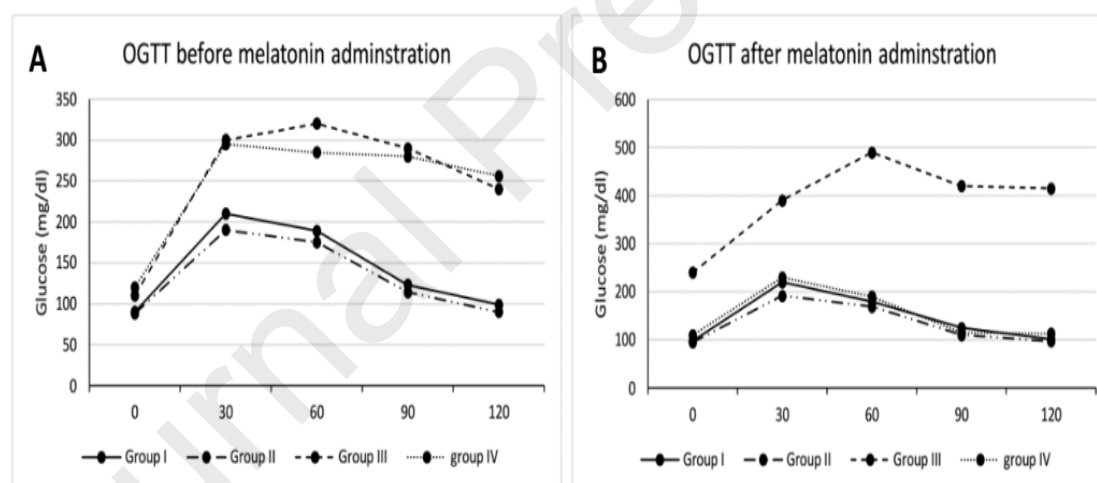


Figure 2: Oral glucose tolerance test (OGTT): (A) before; and (B) after 8-week of melatonin administration. Group I: healthy control rats, group II: melatonin administrated control rats, group III: non-treated STZ diabetic rats and group IV: melatonin treated STZ diabetic rats.

3.4 Oxidative stress parameters

Diabetes induction by STZ in group III caused a reduction in serum SOD and GPx levels (19.09 ± 2.41 and 1340.52 ± 5.69 , respectively) and an elevation in MDA level, 8.95 ± 1.46 , when compared to control groups I and II (figure 3). However, a reduction in MDA level (6.08 ± 2.06) was observed in melatonin treated group IV in comparison

to group III. On the other hand, an elevation in SOD level (23.97 ± 0.67) was recorded in group IV in comparison to that of group III (19.09 ± 2.41) (figure 3).

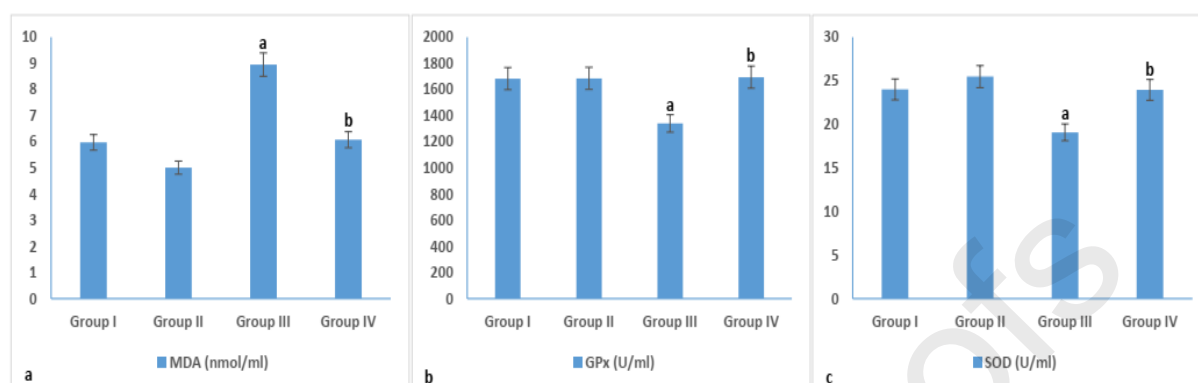


Figure 3: Oxidative stress in different experimental groups. ^arepresents significance compared with the corresponding healthy control group I and ^brepresents significance compared with the corresponding diabetic group III ($P < 0.05$). Group I: healthy control rats, group II: melatonin administrated control rats, group III: non-treated STZ diabetic rats and group IV: melatonin treated STZ diabetic rats.

3.5 Immunological parameters

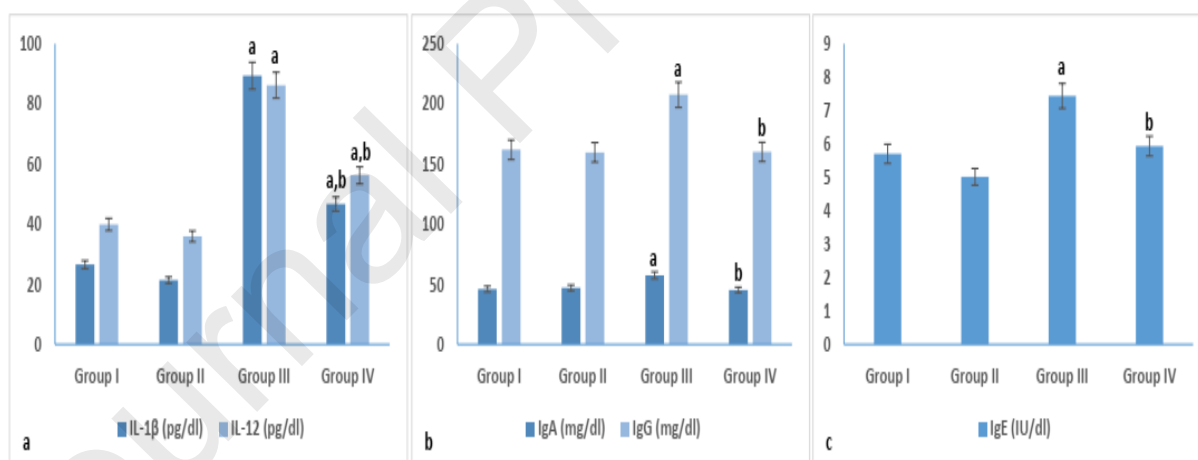


Figure 4: Immunological parameters (cytokines and immunoglobulin) in different experimental groups. ^arepresents significance compared with the corresponding healthy control group I and ^brepresents significance compared with the corresponding diabetic group III ($P < 0.05$). Group I: healthy control rats, group II: melatonin administrated control rats, group III: non-treated STZ diabetic rats and group IV: melatonin treated STZ diabetic rats.

According to the immunological results in figure (4), immunoglobulin levels (57.51 ± 0.81 , 7.44 ± 0.49 and 207.66 ± 1.63 for IgA, IgE and IgG, respectively) were significantly elevated in non-treated diabetic group III in comparison to control

groups I and II. In melatonin treated diabetic group IV, Immunoglobulin levels showed a significant reduction to reach 45.45 ± 1.59 (IgA), 5.94 ± 0.94 (IgE) and 160.21 ± 2.06 (IgG) when compared to those of non-treated diabetic group III.

A significant elevation in level of pro-inflammatory cytokine IL-1 β (89.34 ± 0.87) and IL-12 (86.21 ± 2.40) was observed upon diabetes induction in group III in comparison to healthy controls. Melatonin administration in group IV succeeded in reducing pro-inflammatory cytokines to reach 46.72 ± 0.68 and 56.30 ± 0.59 for IL-1 β and IL-12, respectively, when compared to non-treated diabetic group III. However, levels of cytokines in group IV remains significantly higher than those of healthy controls.

3.6 Histopathological and immunohistochemical studies

Pancreatic sections of healthy control groups I and II revealed average-sized pale-staining islets of Langerhans. Induction of diabetes by STZ in group III caused a size reduction and deformation of pancreatic islet as a result of destruction of the β cells. On the other hand, melatonin administration in diabetic group IV helped in restoring the islets of Langerhans as shown in figure (5). Immunohistochemical staining of pancreatic sections of healthy control groups I and II demonstrated normal brown coloured areas of insulin-immunoreactive β cells and no expression of nuclear transcription factor NF- κ B (Fig. 5). Diabetic group III showed small areas of insulin-secreting β cells and high expression of NF- κ B as compared to control groups I and II. Larger areas of β cells were observed in melatonin administrated diabetic group IV accompanied with a reduction in NF- κ B expression when compared to diabetic group III. According to figure 6, diabetic group III showed a significant reduction in area of islets, β cell count and insulin area; and a significant elevation in NF- κ B expression. Melatonin administration in group IV, reduced NF- κ B expression, enhanced β cells regeneration, increased area of islets and secreted insulin.

Liver sections of normal control group I and melatonin administrated group II showing average central veins with average hepatocytes that were arranged in single cell cords. On the other hand, mildly dilated congested central veins with marked micro-vesicular steatosis of hepatocytes were observed in liver sections of diabetic untreated group III. Melatonin administration, in group IV, decreased inflammation in liver sections where average central veins with average hepatocytes were obvious in fig (7).

Average renal capsule, average glomeruli with average proximal tubules and preserved brush borders were observed in kidney sections of normal control group I and melatonin administrated group II showing (fig. 7). Diabetes induction in group III distorted the rats' kidney, where small-sized glomeruli with widened Bowman's spaces, proximal tubules with mildly vacuolated epithelial lining and partial loss of brush borders were demonstrated in fig. (7). kidney sections of melatonin treated diabetic group IV showed average renal capsule, average glomeruli with average proximal tubules, normal epithelial lining and preserved brush borders.

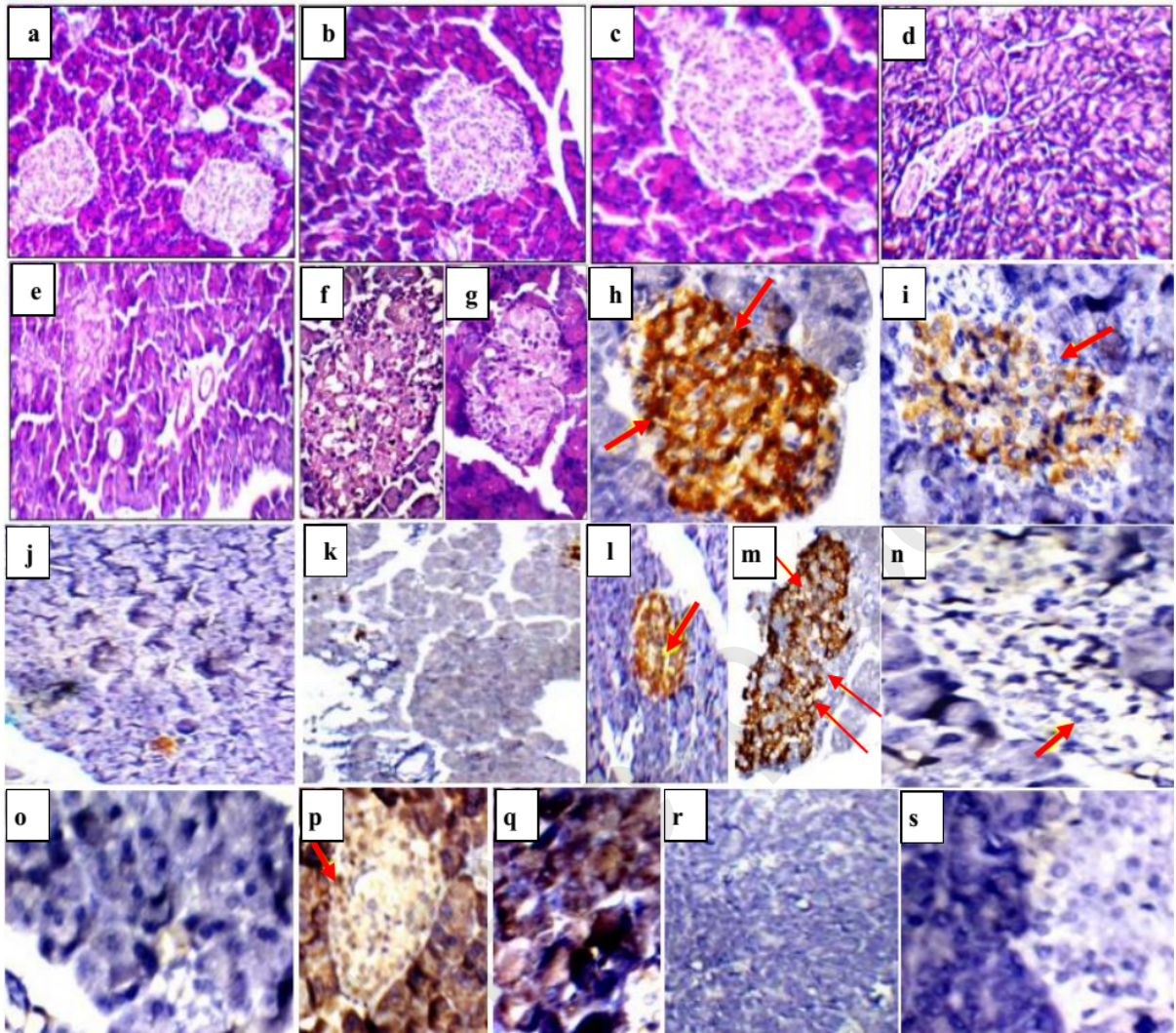


Figure 5: Pancreatic sections of rat showing a], b] and c] normal sized stained islets of Langerhans in healthy control group I and melatonin administrated control group II (H&E; x200&400, respectively), d] and e] small-sized hypocellular pale-staining islets of Langerhans in non-treated diabetic group III (H&E; x200&400, respectively), f] and g] restored islets of Langerhans in melatonin treated diabetic group IV (H&E; x400), h] and i] positive anti-insulin antibody reaction as indicated by brown colour (group I and II; x400), j] and k] negative anti-insulin antibody reaction in non-treated diabetic group III (x200), l] and m] positive anti-insulin antibody reaction in melatonin treated diabetic group IV (x200&x400, respectively), n] and o] no NF- κ B expression in group I and II (x400), p] and q] significant elevation of NF- κ B expression as brown colour indicates positive immunostaining in non treated diabetic group III, r] and s] no NF- κ B expression in melatonin treated diabetic group IV (x200&400, respectively).

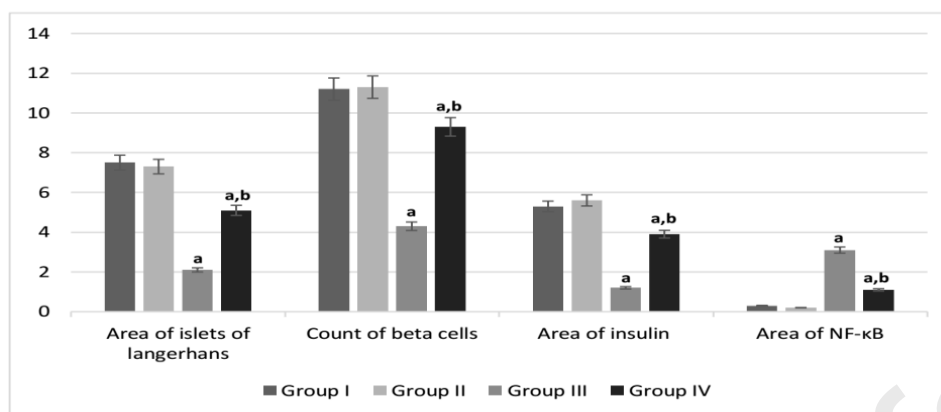


Figure 6: Quantitative analysis of histopathological and immunohistochemical results. ^arepresents significance compared with the corresponding healthy control group I and ^brepresents significance compared with the corresponding diabetic group III ($P < 0.05$). Group I: healthy control rats, group II: melatonin administered control rats, group III: non-treated STZ diabetic rats and group IV: melatonin treated STZ diabetic rats

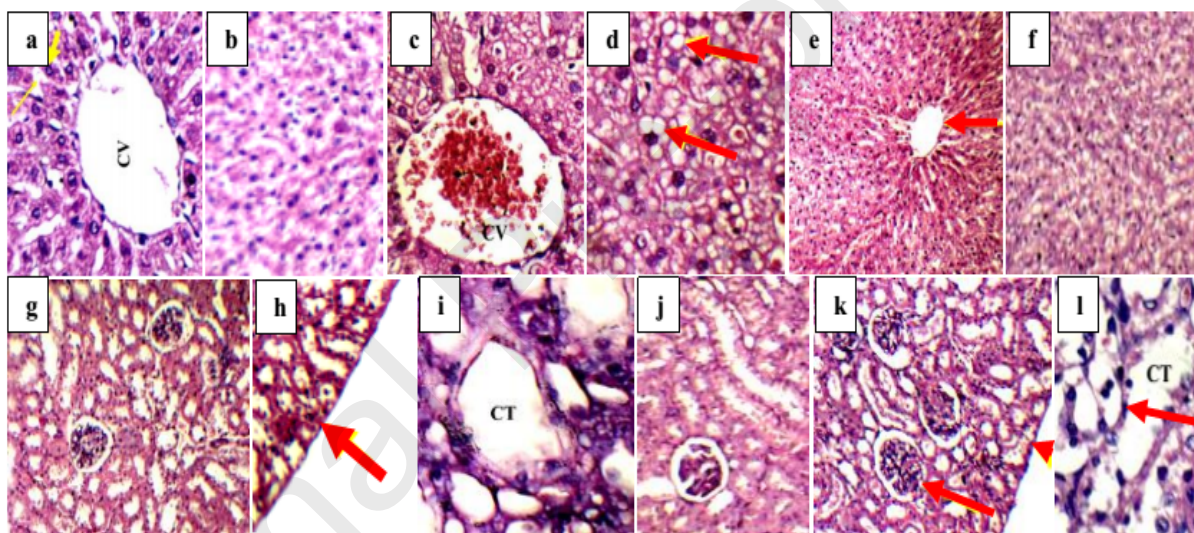


Fig. 7: a] and b] liver sections of normal control group I and melatonin administered group II showing average central veins with average hepatocytes arranged in single cell cords and average intervening blood sinusoids (H&E; x400), c] and d] liver sections of diabetic untreated group III showing mildly dilated congested central veins with marked micro-vesicular steatosis of hepatocytes (arrows) (H&E; x400), e] and f] liver sections of melatonin treated diabetic group IV showing average central veins (arrow) with average hepatocytes (H&E; x200 & 400, respectively), g] and h] Kidney sections of normal control group I and melatonin administered group II showing average renal capsule (arrow), average glomeruli with average proximal tubules and preserved brush borders (H&E, x200), i] and j] kidney sections of diabetic untreated group III showing small-sized glomeruli with widened Bowman's spaces, proximal tubules with mildly vacuolated epithelial lining and partial loss of brush borders (H&E, x400), k] and l] kidney sections of melatonin treated diabetic group IV showing average renal capsule (head arrow), average glomeruli with average proximal tubules, normal epithelial lining and preserved brush borders (arrow) (H&E, x400). CV: central vein and CT: collecting tubules.

4. Discussion

Melatonin regulates sleep, circadian and seasonal rhythms, and immune response; it is recommended in treatment of blind circadian rhythm sleep disorders, delayed sleep phase and insomnia. It is a potent antioxidant (Tan *et al.*, 2000), anti-inflammatory (Nabavi *et al.*, 2019), free radical scavenger, useful in fighting infectious diseases (Maestroni, 2001). A reduction in melatonin secretion and increased insulin resistance has been reported with age; however, melatonin supplementation can relieve these symptoms (Singh and Jadhav, 2014). Also, She *et al.* (2014) reported that melatonin administration reduced insulin resistance and elevated glucose intake in 3T3-L1 adipocytes. Hardeland (2019) found that decreased level of circulating melatonin was associated with losing the anti-oxidant protection and anti-inflammatory effects.

In Goto Kakizaki diabetic rats, diabetes was linked to reduced melatonin level in blood (Frese *et al.*, 2009). Balduini *et al.* (2019) reported that melatonin should be used with caution by people on hypertension or hypoglycemic medications due to its effect on lowering blood glucose level and hypertension. The expression of glucose transporter type IV gene was down regulated, in pinealectomized animals, leading to insulin resistance and glucose intolerance; exogenous melatonin administration has alleviated these symptoms (Rodrigues *et al.*, 2013; Sun *et al.*, 2018). Milosavljevi *et al.* (2018) reported the reduced melatonin level in human dental pulp tissues of diabetic patients; and added that exogenous melatonin administration increased the antioxidant enzymes level and protect the dental pulp tissue. In rats with STZ-induced diabetes, insulin and melatonin co-treatment for two months (1.5 U/100g/day for insulin and 0.2 mg/kg/day in drinking water for melatonin) improved glucose homeostasis and insulin sensitivity in white adipose tissue compared to using only one

of these treatments (Oliveira *et al.*, 2018). Obese mice with insulin resistance have lower melatonin production, according to Sartori *et al.* (2009); who also found that melatonin therapy (100 mg/kg/day in drinking water for two months) improved glucose tolerance. Behram *et al.* (2018) showed that type II diabetic patients, at night, release lower melatonin than healthy individuals. Recent studies found that a single dose of melatonin (1-5 mg) decreases the tolerance of glucose tests at night and day in normal post- and premenopausal females (Heo *et al.*, 2018; Xu *et al.*, 2019). Melatonin decreased HbA1c levels when administered for five months according to Garfinkel *et al.* (2011); and enhanced the glycemic control in diabetic patients according to Rezvanfar *et al.* (2017). Kadhim *et al.* (2006) showed that administration of ten mg of melatonin with metformin, in poorly controlled type II diabetic patients, generated a higher cellular response. Sun *et al.* (2018) found that treatment with three mg of melatonin per day, for twelve weeks, improved insulin sensitivity and reduced inflammation in obese individuals with Acanthosis Nigricans. According to the review of Doosti-Irani *et al.* (2018), melatonin has a role in regulating glycemic homeostasis by increasing insulin sensitivity and decreasing the level of fasting glucose.

In this study, daily administration of 10 mg/kg melatonin in STZ diabetic rats has led to the reduction in FBG and FTA levels which were similar to the healthy control levels. STZ induced diabetes lead to insulin deficiency in untreated group to record an insulin level of 0.91 ng/ml; however, melatonin administration elevated serum insulin level (2.8 ng/ml) in treated group. After 8 weeks of melatonin administration, group IV showed a significantly lower AUC compared to non-treated group III. Thus, melatonin succeeded in the elevation of insulin level, glucose sensitivity and delayed diabetic progression. The same results were observed in diabetic model treated with

melatonin in the study of Agil *et al.* (2012). Our results showed an improvement in kidney and liver function enzymes after melatonin administration. This was proofed by the histopathological examination of both liver and kidney. Where, liver sections of treated group showed normal liver architecture when compared to untreated diabetic group. Also, kidney sections of melatonin treated diabetic group showed average renal capsules, average proximal tubules, normal epithelial lining and preserved brush borders. Usually, high blood glucose level leads to high levels of triglycerides and cholesterol; according to He *et al.* (2015), STZ induced hyperglycemia led to hypertriglyceridemia and hypercholesterolemia. Our results were in agreement with that, where non-treated diabetic group had elevated hepatic cholesterol; and serum cholesterol, triglycerides and LDL-C levels.

Diabetes refers to a group of metabolic disorders that is characterized by hyperglycemia. Hypoglycemia inside body's cells provokes glucogenesis and gluconeogenesis, which causes breakdown of fat (known as diabetic ketoacidosis) and a reduction in synthesis of protein (causes weight and muscle loss, increased hunger, and poor wound healing), whereas extracellular hyperglycemia causes glycemiacoma and increased urination (Ozougwu *et al.*, 2013). The progression of vascular problems in diabetes is thought to be influenced by the oxidative stress (Pham-Huy, 2008). Increased production of free radicles, in diabetes, was linked to the reduction in the antioxidant enzymes like CAT, SOD, and GPx; which in turn led to tissues damage (Lipinski, 2001). Mortalities among diabetic patients, according to the epidemiological research of Pham-Huy (2008), were primarily due to an increase in vascular disorders rather than elevated blood glucose level. In diabetes, oxidative stress caused enzymes damage and elevated insulin resistance; where accumulation of free radicles was due to protein glycation, oxidation of glucose, and enhanced lipid

peroxidation (Maritim *et al.*, 2003). The main causes of oxidative stress are mitochondria; where a part of oxygen is reduced to water, and the leftover oxygen is converted to oxygen free radical ($O^{\cdot-}$), a major reactive oxygen species that is transformed to other reactive species such as $ONOO^{\cdot-}$, $OH^{\cdot-}$, and H_2O_2 (Moussa, 2008) that in turn modulates insulin signalling (Erejuwa, 2012). The pathogenesis of diabetes mellitus has been linked to chronic oxidative stress and inflammation. According to Ambade and Mandrekar (2012), in pathological states, inflammation and oxidative stress are related closely; moreover, chronic inflammation promotes cellular damage primarily through the generation of free radicals in excess and the depletion of antioxidants enzymes (Fialkow *et al.*, 2007). Free radicals accumulation drives pro-inflammatory cytokine expression by activating transcription factors like NF- κ B and activator protein-1 (Oguntibeju, 2019). Due to natural negative feedback mechanisms, like increased synthesis of anti-oxidant chemicals or anti-inflammatory cytokines; oxidative stress and immune response stimulation were generally short-lived under healthy conditions. Both oxidative stress and inflammation become activated in certain chronic disease states, like diabetes, and can have a positive or negative impact on diabetes control depending on a variety of parameters (Hold and El-Omar, 2008).

As a result, inhibiting oxidative stress and inflammatory cytokines signaling mechanisms is a promising technique for diabetes treatment. In this study, melatonin administration decreased serum and hepatic cholesterol, serum triglycerides and serum LDL-C; thus melatonin acted as hypocholesterolemic agents and improved lipid profile in STZ diabetic rats. Other studies demonstrated the melatonin effect on lowering cholesterol absorption in high cholesterol fed rats, which in turn led to a significant reduction in the levels of cholesterol and triglyceride in plasma and liver

(Hussain, 2007). Several studies reported the reduction effect of melatonin, independence of blood glucose level, on elevated MDA level in diabetic models (Salmanoglu *et al.*, 2016). These studies were in agreement with our study, where melatonin administration lowered MDA; and elevated both SOD and GPx in treated rats. Melatonin was reported as an anti-oxidant agent; however, its effect on SOD and GPx was controversial. Where, Salmanoglu *et al.* (2016) reported that melatonin did not increase the activity of both SOD and GPx. Other studies reported that melatonin elevated SOD and GPx levels; Kahya and Nazıroğlu (2016) showed that melatonin up-regulate GSH and GPx levels and down-regulate oxidative stress in diabetic rats. Salmanoglu *et al.* (2016) found that melatonin, as an anti-oxidant, decreased MDA level in type II diabetic rats.

Diabetes is characterized by oxidative stress and chronic inflammation in pancreas that results from β cell death or injury of the islets of Langerhans; and the subsequent infiltration of macrophages and dendritic cells to the site of injury. The infiltrated mononuclear cells secrete pro-inflammatory cytokines as IL-1 β and TNF- α that recruit T cells (Nakayama *et al.*, 2005). Many studies proofed the role of IL-12 in the development of diabetes, where its administration induced premature diabetes onset with high level of INF- γ and high numbers of pancreas-infiltrating dendritic cells as well as Th1/Tc1 cells (Trembleau *et al.*, 1995). IL-12 antagonists' administration reduced T1DM development in 3 weeks age mice (Adorini *et al.*, 2001). High levels of different immunoglobulin were reported in patients with developing diabetes (Isomaa *et al.*, 1999). However, our STZ diabetic animal model exhibited all the previous immunological abnormalities; where high level of IL-1 β , IL-12 and immunoglobulins were observed in diabetic non-treated group. Furthermore, melatonin administration reduced the levels of cytokines and immunoglobulins that

was subsequently reflected on reducing pancreatic inflammation and allowing regeneration of β cells. This was very obvious in pancreatic tissue section of melatonin treated group, where the islets size was improved to some extent in comparison to non-treated group. This improvement can be confirmed by the elevation in insulin level after melatonin administration. Also, this improvement was obvious in pancreatic sections stained by immunohistochemical methods, where melatonin administrated group showed brown coloured islets area larger than that of untreated diabetic group indicating an elevation in insulin secretion. Furthermore, expression of NF- κ B was significantly reduced in melatonin treated diabetic group more than in untreated diabetic group. This reduced expression was reflected on NF- κ B target genes that in turn reduced pro-inflammatory cytokines (IL-1 β and IL-12) production to give a chance for β cells regeneration. Melatonin administration in many animal models suppress NF- κ B expression; as the work of Colombo *et al.* (2018) who reported the reduction of NF- κ B gene expression in cancerous cells. In addition to Chuang *et al.* (1996) who reported that 10 mg/kg of exogenous melatonin decreased the binding activity of NF- κ B to DNA in spleen cells after an hour of its administration. Moreover the work of Li *et al.* (2003) and Ahmed *et al.* (2022) showed that melatonin has an anti-colitis effect due to the suppression of NF- κ B.

Previous studies reported the protective role of melatonin in pancreatitis, where it reduced the inflammatory markers such as edema, neutrophil recruitment and cells vacuolization (Sadek *et al.*, 2017). Experimental models of acute pancreatitis treated with melatonin showed improvement of blood flow and reduced tissue damage (Baykal *et al.*, 2000). Jaworek *et al.* (2012) reported pancreatic regeneration by melatonin administration after the recovery from acute pancreatitis. It was suggested

that melatonin had a therapeutic effect on STZ diabetic rats by reducing oxidative markers and protection of β cells.

In conclusion, melatonin administration in STZ diabetic rats reduced hyperglycemia, hyperlipidemia and oxidative stress; moreover, improvement in liver and kidney functions was noticed. This can be explained by the antioxidant and free radicals scavenging capabilities of melatonin, which, in turn reduced the production of pro-inflammatory cytokines. Therefore, melatonin was helpful in restoring the islets of Langerhans allowing insulin production and diabetes management. It can be concluded that melatonin effectively protected β cells under severe inflammatory situations as a result of its antioxidant effect. However, further studies are required for monitoring blood glucose level and inflammatory cytokines in non-diabetic healthy control individuals that received melatonin for insomnia and improving sleep in different conditions. This can be followed by clinical trials in diabetic patients.

Funding: This research did not receive any specific grant from funding agencies in the public, commercial, or not-for-profit sectors.

Conflict of interest: None.

5. References:

- Adorini, L., 2001. Interleukin 12 and autoimmune diabetes. *Nature genetics* 27, 131–132.
- Agil, A., Rosado, I., Ruiz, R., Figueroa, A., Zen, N., Fernández-Vázquez, G., 2012. Melatonin improves glucose homeostasis in young zucker diabetic fatty rats. *J. Pineal Res.* 52, 203–210.
- Ahmad Hajam, Y., Rai, S., Basheer, M., Ghosh, H., Singh, S., 2018. Protective role of melatonin in streptozotocin induced pancreatic damages in diabetic wistar rat. *Pak J Biol Sci.* 21(9), 423-431.

- Ahmed, O., Farid, A., Elamir, A., 2022. Dual role of melatonin as an anti-colitis and anti-extra intestinal alterations against acetic acid-induced colitis model in rats. *Sci Rep* 12, 6344.
- Amaral, F.G., Turati, A.O., Barone, M., Scialfa, J.H., do Carmo Buonfiglio, D., Peres, R., Peliciari-Garcia, R.A., Afeche, S.C., Lima, L., Scavone, C., Bordin, S., Reiter, R.J., Menna-Barreto, L., Cipolla-Neto, J., 2014. Melatonin synthesis impairment as a new deleterious outcome of diabetes-derived hyperglycemia. *J. Pineal Res.* 57, 67–79.
- Ambade, A., Mandrekar, P., 2012. Oxidative stress and inflammation: essential partners in alcoholic liver disease. *Int J Hepatol* 2012, 853175.
- Atkinson, M.A., Eisenbarth, G.S., Michels, A.W., 2014. Type 1 diabetes. *Lancet* 383(9911), 69–82.
- Balduini, W., Weiss, M.D., Carloni, S., Rocchi, M., Sura, L., Rossignol, C., Longini, M., Bazzini, F., Perrone, S., Ott, D., Wadhawan, R., Buonocore, G., 2019. Melatonin pharmacokinetics and dose extrapolation after enteral infusion in neonates subjected to hypothermia. *J Pineal Res.* 66(4), e12565.
- Baykal, A., Iskit, A.B., Hamaloglou, E., Oguz, M., Hascelik, G., Sayek, Y., 2000. Melatonin modulates mesenteric blood flow and TNF alpha concentrations after lipopolysaccharide challenge. *Eur. J. Surg.* 166, 722–727.
- Behram, K.Y., Guntekin, U., Tosun, V., Korucuk, N., Bozdemir, M.N., 2018. Melatonin protects against streptozotocin-induced diabetic cardiomyopathy by the phosphorylation of vascular endothelial growth factor-A (VEGF-A). *Cell Mol Biol* 64(14), 47-52.
- Bouwens, L., Rooman, I., 2005. Regulation of pancreatic beta-cell mass. *Physiol Rev* 85(4), 1255-1270.
- Bravo, R., Matito, S., Cubero, J., Paredes, S.D., Franco, L., Rivero, M., Rodríguez, A.B., Barriga, C., 2013. Tryptophan-enriched cereal intake improves nocturnal sleep melatonin serotonin and total antioxidant capacity levels and mood in elderly humans. *Age (Dordr)* 35, 1277–1285.

- Chuang, J.I., Mohan, N., Meltz, M.L., Reiter, R.J., 1996. Effect of melatonin on NF-kappa-B DNA-binding activity in the rat spleen. *Cell Biol Int* 20(10), 687-692.
- Colombo, J., Jardim-Perassi, B.V., Ferreira, J.P.S., Braga, C.Z., Sonehara, N.M., Júnior, R.P., Moschetta, M.G., Girol, A.P., Zuccari, D.A.P.C., 2018. Melatonin differentially modulates NF-κB expression in breast and liver cancer cells. *Anticancer Agents Med Chem* 18(12), 1688-1694.
- Di Stefano, A., Paulesu, L., 1993. Inhibitory effect of melatonin on production of IFN gamma or TNF alpha in peripheral blood mononuclear cells of some blood donors. *J. Pineal Res.* 17(4), 164-169.
- Dong, Y., Fan, C., Hu, W., Jiang, S., Ma, Z., Yan, X., Deng, C., Di, S., Xin, Z., Wu, G., Yang, Y., Reiter, R.J., Liang, G., 2016. Melatonin attenuated early brain injury induced by subarachnoid hemorrhage via regulating NLRP3 inflammasome and apoptosis signaling. *J. Pineal Res.* 60, 253–262.
- Donga, E., van Dijk, M., van Dijk, J.G., Biermasz, N.R., Lammers, G.-J., van Kralingen, K., Hoogma, R.P., Corssmit, E.P., Romijn, J.A., 2010. Partial sleep restriction decreases insulin sensitivity in type 1 diabetes. *Diabetes Care* 33, 1573–1577.
- Doosti-Irani, A., Ostadmohammadi, V., Mirhosseini, N., Mansournia, M.A., Reiter, R.J., Kashanian, M., Rahimi, M., Razavi, M., Asemi, Z., 2018. Correction: the effects of melatonin supplementation on glycemic control: a systematic review and meta-analysis of randomized controlled trials. *Hormone Metabol Res* 50(11), e6.
- Eleazu, C.O., Eleazu, K.C., Chukwuma, S., Essien, U.N., 2013. Review of the mechanism of cell death resulting from streptozotocin challenge in experimental animals, its practical use and potential risk to humans. *J Diabetes Metab Disord* 12(1), 60.
- Erejuwa, O.O., 2012. Oxidative stress in diabetes mellitus: is there a role for hypoglycemic drugs and/or antioxidants. *Oxid Stress Dis* pp. 217-246. DOI: 10.5772/32741.

- Farid, A., Hesham, M., El-Dewak, M., Amin, A., (2020). The hidden hazardous effects of stevia and sucralose consumption in male and female albino mice in comparison to sucrose. *SPJ*, 28(10), 1290-1300.
- Fialkow, L., Wang, Y., Downey, G.P., 2007. Reactive oxygen and nitrogen species as signaling molecules regulating neutrophil function. *Free Radic Biol Med* 42, 153-164.
- Frese, T., Bach, A.G., Muhlbauer, E., Ponicke, K., Bromme, H.J., Welp, A., Peschke, E., 2009. Pineal melatonin synthesis is decreased in type 2 diabetic Goto-Kakizaki rats. *Life Sci.* 85(13–14), 526-533.
- Furman, B.L., 2015. Streptozotocin-induced diabetic models in mice and rats. *Curr. Protoc. Pharmacol.* 70, 5.47.1-5.47.20.
- Garfinkel, D., Zorin, M., Wainstein, J., Matas, Z., Laudon, M., Zisapel, N., 2011. Efficacy and safety of prolonged-release melatonin in insomnia patients with diabetes: a randomized, double-blind, crossover study. *Diabetes, metabolic syndrome and obesity: targets and therapy* 4, 307-313.
- Habtemariam, S., Daglia, M., Sureda, A., Selamoglu, Z., Gulhan, M.F., Nabavi, S.M., 2017. Melatonin and respiratory diseases: a review. *Current Topics in Medicinal Chemistry* 17, 467–488.
- Hajam, Y.A., Rai, S., 2020. Melatonin supplementation revives diabetic induced biochemical, histological and hematological impairments in rats. *Heliyon* 6(4), e03770.
- Hajam, Y.A., Rai, S., Pandi-Perumal, S.R., Brown, G.M., Reiter, R.J., Cardinali, D.P., 2021. Coadministration of melatonin and insulin improves diabetes-induced impairment of rat kidney function. *Neuroendocrinology* doi: 10.1159/000520280.
- Hardeland, R., 2019. Aging Melatonin and the Pro- and Anti-Inflammatory Networks. *Int. J. Mol. Sci.* 20(5), 1223.
- He, L., Hao, L., Fu, X., Huang, M., Li, R., 2015. Severe hypertriglyceridemia and hypercholesterolemia accelerating renal injury: a novel model of type 1 diabetic hamsters

induced by short-term high-fat / high-cholesterol diet and low-dose streptozotocin. *BMC Nephrol.* 16, 51.

- Heo, J.I., Yoon, D.W., Yu, J.H., Kim, N.H., Yoo, H.J., Seo, J.A., Kim, S.G., Choi, K.M., Baik, S.H., Choi, D.S., Kim, N.H., 2018. Melatonin improves insulin resistance and hepatic steatosis through attenuation of alpha-2-HS-glycoprotein. *J Pineal Res* 65(2), e12493.
- Hold, G.L., El-Omar, E.M., 2008. Genetic aspects of inflammation and cancer. *Biochem J* 410, 225-235.
- Hussain, S.A.R., 2007. Effect of melatonin on cholesterol absorption in rats. *J. Pineal Res.* 42(3), 267–271.
- Isomaa, B., Almgren, P., Henricsson, M., Taskinen, M.R., Tuomi, T., Groop, L., Sarelin, L., 1999. Chronic complications in patients with slowly progressing autoimmune type I diabetes (LADA). *Diabetic Care* 8, 1347-1353.
- Jaworek, J., Szklarczyk, J., Jaworek, A.K., Nawrot-Porąbka, K., Leja-Szpak, A., Bonior, J., Kot, M., 2012. Protective effect of melatonin on acute pancreatitis. *Int. J. Inflamm.* 2012, 173675
- Kadhim, H.M., Ismail, S.H., Hussein, K.I., Bakir, I.H., Sahib, A.S., Khalaf, B.H., Hussain, S.A., 2006. Effects of melatonin and zinc on lipid profile and renal function in type 2 diabetic patients poorly controlled with metformin. *J Pineal Res* 41(2), 189-193.
- Kahya, M.C., Nazıroğlu, M., 2016. Melatonin reduces lens oxidative stress level in STZ-induced diabetic rats through supporting glutathione peroxidase and reduced glutathione values. *J. Cell Neurosci. Oxid. Stress* 8(2), 588-594.
- Kanter, M., Uysal, H., Karaca, T., Sagmanligil, H.O., 2006. Depression of glucose levels and partial restoration of pancreatic beta-cell damage by melatonin in streptozotocin-induced diabetic rats. *Arch Toxicol.* 80(6), 362-369.
- Klepac, N., Rudes, Z., Klepac, R., 2006. Effects of melatonin on plasma oxidative stress in rats with streptozotocin induced diabetes. *Biomed Pharmacother* 60(1), 32-35.

- Lenzen, S., 2008. The mechanisms of alloxan- and streptozotocin-induced diabetes. *Diabetologia* 51(2), 216-226.
- Li, J.H., Yu, J.P., Yu, H.G., Xu, X.M., Yu, L.L., Liu, J., Luo, H.S., 2005. Melatonin reduces inflammatory injury through inhibiting NF-kappa B activation in rats with colitis. *Mediators Inflamm* 2005(4), 185-193.
- Lipinski, B., 2001. Pathophysiology of oxidative stress in diabetes mellitus. *J Diabetes its Complications* 15(4), 203-210.
- Maestroni, G.J., 2001. The immunotherapeutic potential of melatonin. *Expert Opin. Investig. Drugs* 10(3), 467-476.
- Maritim, A.C., Sanders, R.A., Watkins, J.B., 2003. Diabetes, oxidative stress, and antioxidants: a review. *J Biochem Mol Toxicol* 17(1), 24-38.
- Milosavljević, A., Jukić, D.L., Toljić, B., Milašin, J., Želetović, D.B., Brković, B., Roganović, J., 2018. Melatonin levels in human diabetic dental pulp tissue and its effects on dental pulp cells under hyperglycaemic conditions. *Int Endodon J.* 51(10), 1149-1158.
- Moussa, S.A. 2008. Oxidative stress in diabetes mellitus. *Romanian J Biophys* 18(3), 225-236.
- Nabavi, S.M., Nabavi, S.F., Sureda, A., Xiao, J., Dehpour, A.R., Shirooie, S., Silva, A.S., Baldi, A., Khan, H., Daglia, M., 2019. Anti-inflammatory effects of Melatonin: A mechanistic review. *Crit. Rev. Food Sci. Nutr.* 59(1), S4-S16.
- Nakayama, M., Abiru, N., Moriyama, H., Babaya, N.L., Iu, E., Miao, D., Yu, L., Wegmann, D.R., Hutton, J.C., Elliott, J.F., Eisenbarth, G.S., 2005. Prime role for an insulin epitope in the development of type 1 diabetes in nod mice. *Nature* 435(7039), 220-223.
- Oguntibeju, O.O., 2019. Type 2 diabetes mellitus, oxidative stress and inflammation: examining the links. *Int J Physiol Pathophysiol Pharmacol* 11(3), 45-63.
- Oliveira, A.C., Andreotti, S., Sertie, R.A.L., Campana, A.B., de Proença, A.R.G., Vasconcelos, R.P., Oliveira, K.A., Coelho-de-Souza, A.N., Donato-Junior, J., Lima, F.B.,

2018. Combined treatment with melatonin and insulin improves glycemic control, white adipose tissue metabolism and reproductive axis of diabetic male rats. *Life Sci.* 199, 158-166.
- Ozougwu, J.C., Obimba, K.C., Belonwu, C.D., Unakalamba, C.B., 2013. The pathogenesis and pathophysiology of type 1 and type 2 diabetes mellitus. *J Physiol Pathophysiol* 4(4), 46-57.
 - Parasuraman, S., Raveendran, R., Kesavan, R., 2010. Blood sample collection in small laboratory animals. *J Pharmacol Pharmacother* 1(2), 87-93.
 - Pedro, P.F., Tsakmaki, A., Bewick, G.A., 2020. The glucose tolerance test in mice. *Methods Mol Biol* 2128, 207-216.
 - Peschke, E., Stumpf, I., Bazwinsky, I., Litvak, L., Dralle, H., Muhlbauer, E., 2007. Melatonin and type 2 diabetes - a possible link? *J. Pineal Res.* 42(4), 350-358.
 - Pham-Huy, L.A., He, H., Pham-Huy, C., 2008. Free radicals, antioxidants in disease and health. *IJBS* 4(2), 89-96.
 - Rezvanfar, M.R., Heshmati, G., Chehrei, A., Haghverdi, F., Rafiee, F., Rezvanfar, F., 2017. Effect of bedtime melatonin consumption on diabetes control and lipid profile. *Int J Diabetes Dev Count* 37(1), 74-77.
 - Rodrigues, S.C., Pantaleão, L., Lellis-Santos, C., Veras, K., Amaral, F., Anhê, G., Bordin, S., 2013. Increased corticosterone levels contribute to glucose intolerance induced by the absence of melatonin. *Feder Am Soc Exp Biol.* 2013, 1161.
 - Saberzadeh-Ardestani, B., Karamzadeh, R., Basiri, M., Hajizadeh-Saffar, E., Farhadi, A., Shapiro, A.M.J., Tahamtani, Y., Baharvand, H., 2018. Type 1 Diabetes Mellitus, Cellular and Molecular Pathophysiology at A Glance. *Autumn.* 20(3), 294–301.
 - Sadek, A.S., Khattab, R.S., 2017. The protective role of melatonin on l-arginine-induced acute pancreatitis. *Folia Morphol.* 76, 66–73.

- Salmanoglu, D.S., Gurpinar, T., Vural, K., Ekerbicer, N., Dariverenli, E., Var, A., 2016. Melatonin and l-carnitin improves endothelial dysfunction and oxidative stress in type 2 diabetic rats. *Redox Biol.* 8, 199–204.
- Sartori, C., Dessen, P., Mathieu, C., Monney, A., Bloch, J., Nicod, P., Scherrer, U., Duplain, H., 2009. Melatonin improves glucose homeostasis and endothelial vascular function in high-fat diet-fed insulin-resistant mice. *Endocrinology* 150(12), 5311-5317.
- She, M., Hou, H., Wang, Z., Zhang, C., Laudon, M., Yin, W., 2014 Melatonin rescues 3T3-L1 adipocytes from FFA-induced insulin resistance by inhibiting phosphorylation of IRS-1 on ser307. *Biochimie.* 103, 126–130.
- Singh, M., Jadhav, H.R., 2014. Melatonin: Functions and ligands. *Drug Discov. Today* 19, 1410–1418.
- Sun, H., Wang, X., Chen, J., Gusdon, A.M., Song, K., Li, L., Qu, S., 2018. Melatonin treatment improves insulin resistance and pigmentation in obese patients with acanthosis nigricans. *Int J Endocrinol.* 2018, 2304746.
- Tan, D.X., Manchester, L.C., Reiter, R.J., Qi, W.B., Karbownik, M., Calvo, J.R., 2000. Significance of melatonin in antioxidative defense system: Reactions and products. *Biological Signals and Receptors* 9(3-4), 137-159.
- Tesch, G.H., Allen, T.J., 2007. Rodent models of streptozotocin-induced diabetic nephropathy. *Nephrology* 12(3), 261-266.
- Trembleau, S., Penna, G., Bosi, E., Mortara, A., Gately, M.K., Adorini, L., 1995. IL-12 administration induces Th1 cells and accelerates autoimmune diabetes in NOD mice. *J. Exp. Med.* 181, 817.
- Vriend, J., Reiter, R.J., 2014. Melatonin as a proteasome inhibitor. Is there any clinical evidence? *Life Sciences* 115, 8–14.
- Wu, J., Yan, L.J., 2015. Streptozotocin-induced type 1 diabetes in rodents as a model for studying mitochondrial mechanisms of diabetic β cell glucotoxicity. *Diabetes Metab Syndr Obes* 8, 181-188.

- Xie, Z., Chen, F., Li, W.A., Geng, X., Li, C., Meng, X., Feng, Y., Liu, W., Yu, F., 2017. A review of sleep disorders and melatonin. *Neurological Research* 39, 559–565.
- Xu, J., Gao, H., Zhang, L., Rong, S., Yang, W., Ma, C., Chen, M., Huang, Q., Deng, Q., Huang, F., 2019. Melatonin alleviates cognition impairment by antagonizing brain insulin resistance in aged rats fed a high-fat diet. *J Pineal Res* 67(2), e12584.
- Yavuz, O., Cam, M., Bukan, N., Guven, A., Silan, F., 2003. Protective effect of melatonin on beta-cell damage in streptozotocin-induced diabetes in rats. *Acta Histochem* 105(3), 261-266.
- Yin, D., Tao, J., Lee, D.D., Shen, J., Hara, M., Lopez, J., Kuznetsov, A., Philipson, L.H., Chong, A.S., 2006. Recovery of islet beta-cell function in streptozotocin-induced diabetic mice: an indirect role for the spleen. *Diabetes* 55(12), 3256-3263.
- Zhang, X., Xie, L., Zhong, M., Yang, B., Yang, Q., Yang, H., Xie, C., 2020. The association between melatonin receptor 1B gene polymorphisms and type 2 diabetes mellitus (T2DM) in Chinese populations: a meta-analysis. *Ann Palliat Med* 9(3), 957-966.

Declaration of interests

The authors declare that they have no known competing financial interests or personal relationships that could have appeared to influence the work reported in this paper.

The authors declare the following financial interests/personal relationships which may be considered as potential competing interests: