

See discussions, stats, and author profiles for this publication at: <https://www.researchgate.net/publication/320638079>

# Backward Bifurcation in a Fractional Order Epidemiological Model

Article in *Progress in Fractional Differentiation and Applications* · October 2017

DOI: 10.18576/pfda/030404

CITATION

1

READS

111

4 authors, including:



**Ahmed El-Sayed**

Alexandria University

231 PUBLICATIONS 4,636 CITATIONS

SEE PROFILE



**A. A. M. Arafa**

Port Said University

55 PUBLICATIONS 846 CITATIONS

SEE PROFILE



**Amaal Sayed**

Nile University

3 PUBLICATIONS 4 CITATIONS

SEE PROFILE

Some of the authors of this publication are also working on these related projects:



Non-Newtonian nanofluid [View project](#)



Hybrid functional differential equation [View project](#)

# Backward Bifurcation in a Fractional Order Epidemiological Model

Ahmed M. A. El-Sayed<sup>1</sup>, Anasid A. M. Arafa<sup>2</sup>, Mohamed Khalil<sup>3,\*</sup> and Amaal Sayed<sup>4</sup>

<sup>1</sup> Department of mathematics, Faculty of Science, Alexandria University, Alexandria, Egypt

<sup>2</sup> Department of Mathematics, Faculty of Science, Port Said University, Port Said, Egypt

<sup>3</sup> Department of Mathematics, Faculty of Engineering, October University for Modern Sciences and Arts (MSA University), Giza, Egypt

<sup>4</sup> Department of Mathematics, Faculty of Science, Port Said University, Port Said, Egypt

Received: 2 Dec. 2016, Revised: 6 Apr. 2017, Accepted: 13 Apr. 2017

Published online: 1 Oct. 2017

**Abstract:** An epidemiological fractional order model which displays backward bifurcation for some parameters values, is studied in this paper. Because integer order of such model does not convey any information about the effect of the memory or learning mechanism of human population which influences disease transmission, we use the fractional order model in which the memory effect is considered well. As the fractional derivative is considered as the memory index, so the goal of this paper is to study the impact of fractional order derivative on the backward bifurcation phenomenon and on the basic reproduction number  $R_0$ .

**Keywords:** Fractional calculus, computer virus, numerical solution, predictor-corrector method.

## 1 Introduction

Recent outbreaks of infectious diseases threaten human health and economic activities. So, it is an essential to understand the dynamics of the infectious diseases and predict their future behaviors [1]. Mathematical modeling allows us to predict the progress of an outbreak and to quantify the uncertainty in these predictions [2, 3, 4, 5, 6, 7, 8, 9]. Classical models often show only forward bifurcation. A key measure in such models to monitor the spread of diseases in a population is the basic reproduction number  $R_0$  [10, 11, 12]. For such classical epidemic models, the infection persists if the basic reproduction number  $R_0 > 1$ , and dies out if  $R_0 < 1$ . Endemicity of disease may occur even in case of  $R_0 < 1$  [10]. So, different control measures must be considered [13, 14, 15, 12, 16].  $R_0$  must be reduced to be below sub-threshold  $R_0^*$  such that  $R_0^* < R_0 < 1$  to avoid the endemic region  $[R_0^*, 1]$ . The phenomenon of backward bifurcation can be distinguished in many infectious diseases models [13]. In such case, the reproduction number is not enough to predict the behavior of the epidemic [17, 18]. Backward bifurcation appears in some models for some factors, like the incomplete degree protection for vaccination models [16]. This means that the occurrence of a backward bifurcation may have important public health implications. The following model which is presented in [10] shows backward bifurcations for some certain values of parameters:

$$\begin{aligned} \frac{dS_0}{dt} &= \mu - (\mu + \beta I)S_0, \\ \frac{dI}{dt} &= \beta(S_0 + rS_1)I - (\alpha + \mu)I, \\ \frac{dS_1}{dt} &= \alpha I - (\mu + r\beta I)S_1, \end{aligned} \tag{1}$$

where

$$S_0 + I + S_1 = 1,$$

\* Corresponding author e-mail: [mkibrahim@msa.eun.eg](mailto:mkibrahim@msa.eun.eg)

$S_0$  is number of individuals who have never been infected,

$I$  is the infectious individuals,

$S_1$  is the susceptible individuals with minimum one prior infection.

The authors in [10] assumed that  $\beta$  is the contact rate between  $S_0$  and  $I$ , the death rate is  $\mu$  and the recovery rate is  $\alpha$ .

When  $r=0$ , the model is considered as SIR model while  $r=1$ , the model can be considered as SIS model if  $r=1$ .

In the integer order model (1), the memory effect is ignored, so to consider the memory effect we should use the same model but with fractional order as in section two in which epidemiological model with memory is presented and also, we explain the reasons of using fractional order models. Basic reproduction number, forward bifurcation and backward bifurcation are illustrated in section three while section four is dedicated for numerical solutions and discussion.

## 2 Epidemiological Model with Memory

Nevertheless, fractional calculus is an old science [19,20,21,2,3,4,5,6], it has been applied in many of sophisticated applications as it has the property of memory effect which is not found in classical calculus [22,23,24]. Memory effect is plentiful in biological and epidemiological systems [23,15,25,26,27,28], so it can be considered as an excellent tool for describing memory phenomena [29]. In other words, fractional order models are called models with memory [25,26,27,28,30,31,32].

If the order approaches zero, then the system rely powerfully on its previous history but if the order approaches one, the system has a short memory reliance [29,24,1]. In [2,22], it is shown that the fractional order model results are closer to the measured collected data. Hence, we present the following model that is based on integer order model presented in [10] as follows

$$\begin{aligned} D^q(S_0) &= \mu - (\mu + \beta I)S_0, \\ D^q(I) &= \beta(S_0 + rS_1)I - (\alpha + \mu)I, \\ D^q(S_1) &= \alpha I - (\mu + r\beta I)S_1, \end{aligned} \quad (2)$$

where  $0 < q \leq 1$ .

Caputo fractional order derivative is used in model (2).

$D^q f(x) = J^{m-q}(D^m f(x))$ , where  $q \in ]m-1, m]$ ,  $m$  is a natural number,

where the fractional integral operator  $J^q f(x)$  is given by the singular integral operator of convolution type as:

$$\begin{aligned} J^q f(x) &= \frac{1}{\Gamma(q)} \int_0^x (x-t)^{q-1} f(t) dt, \quad q > 0, x > 0, \\ J^0 f(x) &= f(x). \end{aligned}$$

The operator  $J^q f(x)$  is called integral with memory.

Model (2) has some defect as the left side of (2) has dimension  $(t)^{-q}$  where the dimension of the other side is  $(t)^{-1}$ . So, it is recommended to use the procedure presented in [22,33]. A true form of model (2) can be written is as follows:

$$\begin{aligned} D^q(S_0) &= \mu^q - (\mu^q + \beta^q I)S_0, \\ D^q(I) &= \beta^q(S_0 + rS_1)I - (\alpha^q + \mu^q)I, \\ D^q(S_1) &= \alpha^q I - (\mu^q + r\beta^q I)S_1, \end{aligned} \quad (3)$$

The systems (2) and (3) are called systems with memory [16].

## 3 Basic Reproduction Number $R_0$ and Backward Bifurcation

$R_0$  is the mean number of new infections from an infected individual in a completely susceptible population. It carries information about the continuity of a disease [33]. Using the method of next generation matrix [10], basic reproduction number for (1) and (2) can be driven to be

$$R_0 = \frac{\beta}{\alpha + \mu} \quad \text{and} \quad R_0^* = \frac{\beta^*}{\alpha + \mu}, \quad (4)$$

where  $\beta^*$  is the critical contact rate. Similarly, for th system (3):

$$\bar{R}_0 = \frac{\beta^q}{\alpha^q + \mu^q} \text{ and } \bar{R}_0^* = \frac{(\beta^*)^q}{\alpha^q + \mu^q}. \tag{5}$$

From expression (4) it is clear that  $R_0 \propto \beta$  which means that,  $R_0$  increases linearly as successful contact rate  $\beta$ . Relations (5), show that  $\bar{R}_0 \propto \beta^q$ .  $\bar{R}_0$  increases at a power law rate as  $\beta$  increases, which is slower than the linear rate. Therefore, the memory and learning mechanism in human population, may control the disease spread rate. If  $q \rightarrow 1$ , then the system has a short memory dependence while  $q \rightarrow 0$  implies that, the system has a perfect memory.

### 3.1 Endemic equilibria and their asymptotic stability

In (1) and (2), the disease-free equilibrium  $E_0 = (1, 0, 0)$  and endemic equilibria  $E = (S_0^*, I^*, S_1^*)$  are such that

$$\begin{aligned} S_0^* &= \frac{\mu}{\mu + \beta I^*}, \\ I^* &= \frac{1}{2} \left( \left( 1 - \frac{1}{rR_0} - \frac{\mu}{(\alpha + \mu)R_0} \right) + \sqrt{\left( 1 - \frac{1}{rR_0} - \frac{\mu}{(\alpha + \mu)R_0} \right)^2 + \frac{4\mu \left( 1 - \frac{1}{R_0} \right)}{(\alpha + \mu)rR_0}} \right), \\ S_1^* &= \frac{\mu I^*}{\mu + r\beta I^*}. \end{aligned}$$

### 3.2 Forward bifurcation

If  $r \in ]0, 1 + \mu/\alpha$ , [then the systems (1) and (2) has the following endemic states [31]:

1.  $E_0 = (1, 0, 0)$  which is globally stable in case that  $R_0 < 1$ .
2. The endemic equilibrium  $E = (S_0^*, I^*, S_1^*)$  which is globally asymptotically stable in case that  $|\arg(\lambda)| > \frac{q\pi}{2}$ .

### 3.3 Backward bifurcation

For  $r \in ]1 + \mu/\alpha, \infty$ [the systems (1) and (2) display a backward bifurcation, there is a particular endemic steady state or two positive steady states which depend on the roots of the (6) [10]:

$$F(\beta, I) = r\beta^2 I^2 + (r\mu - (r\beta - (\alpha + \mu)))\beta I + \mu(\alpha + \mu - \beta) = 0. \tag{6}$$

The feasible (i.e. positive, real) solution of this equation (6) as in [10] is

$$I^{*\pm} = \frac{1}{2} \left( \left( 1 - \frac{1}{rR_0} - \frac{\mu}{(\alpha + \mu)R_0} \right) \pm \sqrt{\left( 1 - \frac{1}{rR_0} - \frac{\mu}{(\alpha + \mu)R_0} \right)^2 + \frac{4\mu \left( 1 - \frac{1}{R_0} \right)}{(\alpha + \mu)rR_0}} \right).$$

And similarly, for the system (3) we get:

$$\bar{I}^{*\pm} = \frac{1}{2} \left( \left( 1 - \frac{1}{r\bar{R}_0} - \frac{\mu^q}{(\alpha^q + \mu^q)\bar{R}_0} \right) \pm \sqrt{\left( 1 - \frac{1}{r\bar{R}_0} - \frac{\mu^q}{(\alpha^q + \mu^q)\bar{R}_0} \right)^2 + \frac{4\mu^q \left( 1 - \frac{1}{\bar{R}_0} \right)}{(\alpha^q + \mu^q)r\bar{R}_0}} \right).$$

The condition for the local stability of the  $E_0, E$  is that the eigenvalues  $\lambda_i$  of the Jacobian matrices related to  $E_0, E$  satisfy the condition  $|\arg \lambda_i| > \frac{q\pi}{2}$ . This shows fractional order models are more stable or stable as their corresponding integer order.

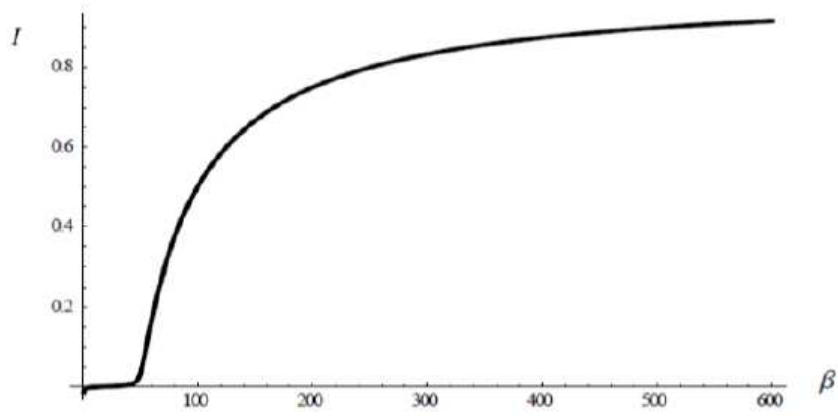


Fig. 1: Bifurcation diagram showing forward bifurcation when  $r = 0.2$  and  $q = 1$ .

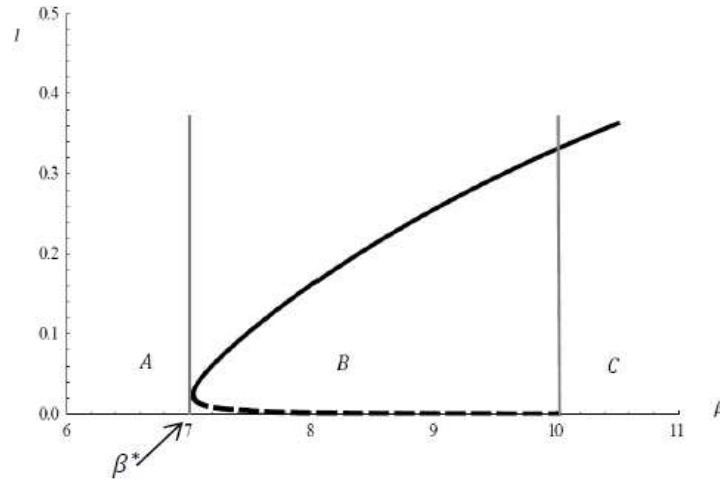


Fig. 2: Bifurcation diagram showing backward bifurcation when  $r = 1.5$  and  $q = 1$ .

**Table 1:** A summary of the backward bifurcation shown in Figure 2

Region	$\beta$	$R_0$	Stability of steady state
A	$\beta < 7$	$R_0 < 0.698$	The disease-free equilibrium points are stable.
B	$7 < \beta < 10.015$	$0.698 < R_0 < 1$	The disease-free and endemic equilibrium points are stable while the other endemic equilibrium point is unstable.
C	$\beta > 10.015$	$R_0 > 1$	The disease-free equilibrium is unstable while the endemic equilibrium is stable.

### 4 Numerical Simulation and Discussion

We set  $\alpha = 10$ ,  $\mu = 0.015$ ,  $\beta = 1.8$  as in [10].

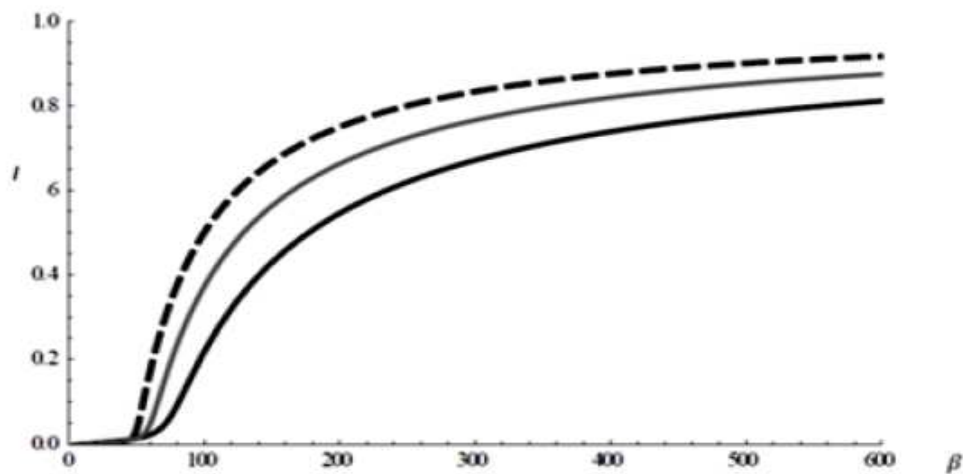


Fig. 3: Bifurcation diagram showing forward bifurcation when  $r = 1.5$  for  $q = 1$ (dashed black line),  $q = 0.9$  (gray solid line),  $q = 0.8$  (solid black line).

anu

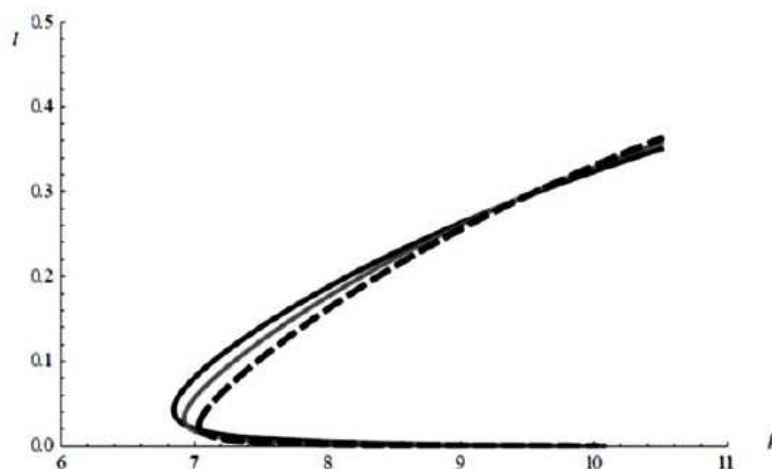


Fig. 4: Bifurcation diagram showing backward bifurcation when  $r = 1.5$  for  $q = 1$ (dashed black line),  $q = 0.9$  (gray solid line),  $q = 0.8$  (solid black line).

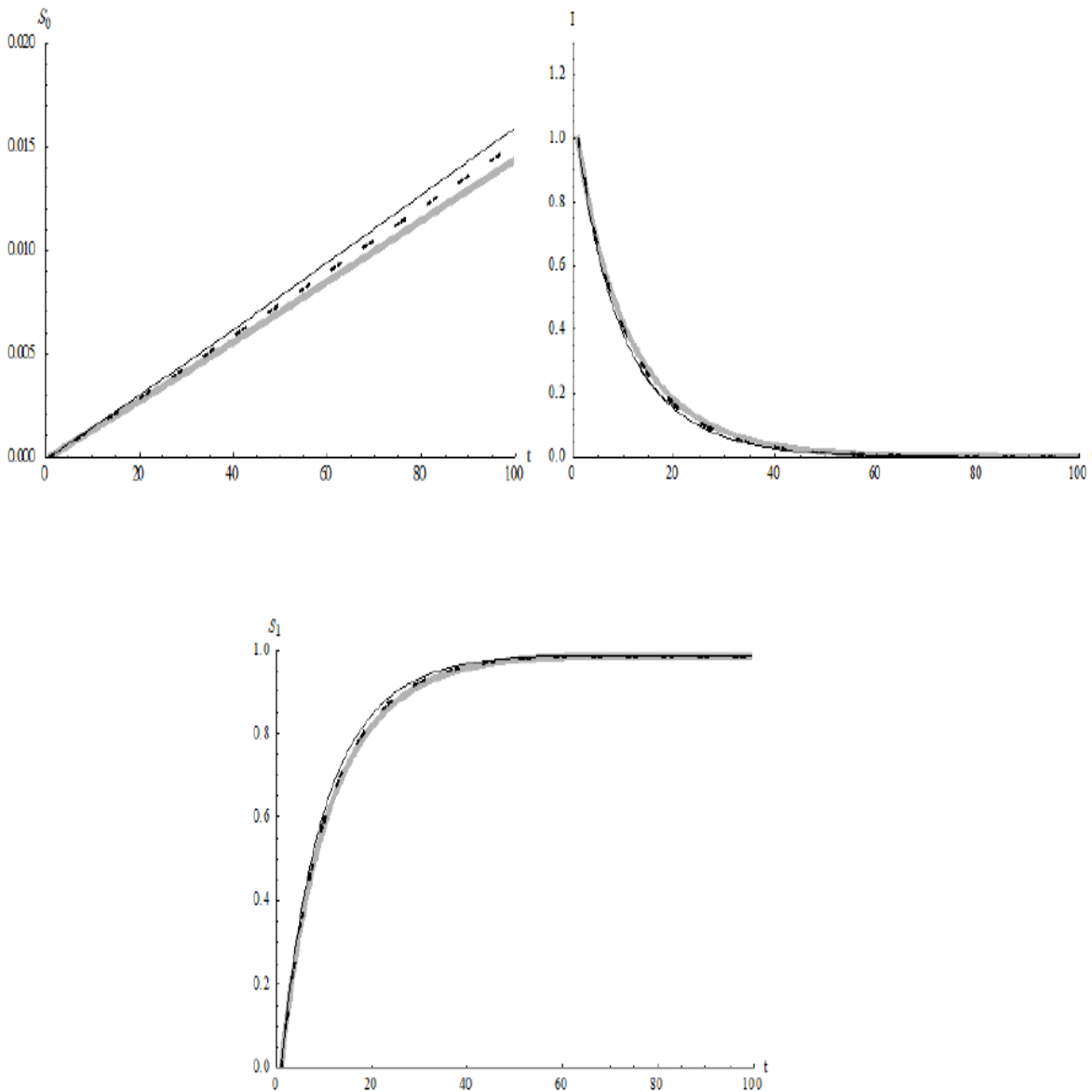


Fig. 5: The solution of system (1) for  $q = 1$  (the gray line),  $q = 0.99$ , (the dashed line),  $q = 0.95$  (the black solid line).

## 5 Conclusion

In this paper, the behaviors of backward bifurcation that arises in epidemiological models with memory has been studied. Fractional order derivative has been proved to be an attractive tool for describing memory phenomena in biology and epidemiology. The impact of backward bifurcation on a fractional order epidemiological model has been studied here. The existence of a backward bifurcation has essential effects that helps to co eradicate infectious diseases. If the disease becomes endemic, so to control the disease, we have to decrease  $R_0$  to enter the region where there is no endemic steady state. The effect of the index of memory which is considered as the physical meaning of the fractional order derivative is discussed here. Memory effect on bifurcation diagrams are studied as shown in Figure 3 and Figure 4. If  $q \rightarrow 1$ , then the system has a short memory dependence while  $q \rightarrow 0$  implies that, the system depends on the previous memory (see Figure 3 and Figure 4). We argue that fractional order models are suitable to describe behavior of infectious diseases where memory is important to be considered.

## References

- [1] World Health Organization: WHO Guide to Identifying the Economic Consequences of Disease and Injury. Geneva: World Health Organization; 2009.
- [2] A. A. M. Arafa, S. Z. Rida and M. Khalil, A fractional-order model of HIV infection: numerical solution and comparisons with data of patients, *Int. J. Biomath.* **7**(4), (2014).
- [3] A. A. M. Arafa, S. Z. Rida and M. Khalil, A fractional-order model of HIV infection with drug therapy effect, *J. Egypt. Math. Soc.* **22**, 538–543 (2014).
- [4] A. A. M. Arafa, S. Z. Rida and M. Khalil, The effect of anti-viral drug treatment of human immunodeficiency, *Appl. Math. Model.* **37**, 2189–2196 (2013).
- [5] A. A. M. Arafa, S. Z. Rida and M. Khalil, Fractional modeling dynamics of HIV and CD4<sup>+</sup> T-cells during primary infection, *Nonlin. Biomed. Phys.* **6**, 1-7 (2012).
- [6] A. A. M. Arafa, S. Z. Rida and M. Khalil, Fractional order model of human T-cell lymphotropic virus I (HTLV-I) infection of CD4<sup>+</sup>T-cells, *Adv. Stud. Biol.* **3**, 347 – 353 (2011).
- [7] Y. Ding and H. Yea, A fractional-order differential equation model of HIV infection of CD4<sup>+</sup>T-cells, *Math. Comput. Model.* **50** 386–392 (2009).
- [8] M. J. Keeling and L. Danon, Mathematical modelling of infectious diseases, *Brit. Med. Bull.* **92**, 33–42 (2009).
- [9] F. A. Rihan, Numerical modeling of fractional-order biological systems, *Abstr. Appl. Anal.* **2013** (2013).
- [10] M. Safan, H. Heesterbeek and K. Dietz, The minimum effort required to eradicate infections in models with backward bifurcation, *J. Math. Biol.* **53**, 703–718 (2006).
- [11] M. Safan, M. Kretzschmar and K. P. Hadeler, Vaccination based control of infections in SIRS models with reinfection: special reference to pertussis, *J. Math. Biol.* **67** 1083–1110 (2013).
- [12] M. Safan and F. A. Rihan, Mathematical analysis of an SIS model with imperfect vaccination and backward bifurcation, *Math. Comput. Simul.* **96**, 195–206 (2014).
- [13] F. Brauer, Backward bifurcations in simple vaccination models, *J. Math. Anal. Appl.* **298**, 418–431 (2004).
- [14] B. Buonomolano and D. Lacitignola, On the backward bifurcation of a vaccination model with nonlinear incidence, *Nonlinear Anal. Model. Contr.* **16**, 30–46 (2011).
- [15] H. A. A. El-Saka, Backward bifurcations in fractional-order vaccination models, *J. Egypt. Math. Soc.* **23**, 49–55 (2015).
- [16] O. Sharomi, C. N. Podder, A. B. Gumel, E. H. Elbasha and J. Watmough, Role of incidence function in vaccine-induced backward bifurcation in some HIV models, *Math. Biosci.* **210**(2), 436–463 (2007).
- [17] H. Gómez-Acevedo and M. Y. Li, Backward bifurcation in a model for HTLV-I infection of CD4<sup>+</sup> T cells, *Bull. Math. Biol.* **67** 101–114 (2005).
- [18] A. A. Lashari, K. Hattaf, G. Zaman and X. Z. Li, Backward bifurcation and optimal control of a vector borne disease, *Appl. Math. Inf. Sci.* **71**(1), 301–309 (2013).
- [19] E. Ahmed, A. M. A. El-Sayed and H. A. A. El-Saka, Equilibrium points, stability and numerical solutions of fractional-order predator–prey and rabies models, *J. Math. Anal. Appl.* **325**, 542–553 (2007).
- [20] E. Ahmed and A. S. Elgazzar, On fractional order differential equations model for nonlocal epidemics, *Phys. A* **379**, 607–614 (2007).
- [21] F. A. Abdullah and A. I. Md. Ismail, Simulations of the spread of the Hantavirus using fractional differential equations, *Matematika* **27**, 149–158 (2011).
- [22] K. Diethelm, A fractional calculus based model for the simulation of an outbreak of dengue fever, *Nonlinear Dyn.* **71**, 613–619 (2013).
- [23] A. E. M. El-Misiery and E. Ahmed, On a fractional model for earthquakes, *Appl. Comput. Math.* **178**, 207–211 (2006).
- [24] K. Moaddy, A. G. Radwan, K. N. Salama, S. Momani and I. Hashim, The fractional-order modeling and synchronization of electrically coupled neuron systems, *Comput. Math. Appl.* **64** 3329–3339 (2012).
- [25] A. M. A. El-Sayed, S.Z. Rida and A. A. M. Arafa, On the solutions of time-fractional bacterial chemotaxis in adiffusion gradientchamber, *Int. J. Nonlin. Sci. Numer.* **7**, 485–492 (2009).
- [26] A. M. A. El-Sayed, A. E. M. El-Mesiry and H. A. A. El-Saka, Numerical solution for multi-term fractional (arbitrary) orders differential equations, *Comput. Appl. Math.* **23**, 33–54 (2004).
- [27] A. M. A. El-Sayed, I. L. El-Kalla and E. A. A. Ziada, Analytical and numerical solutions of multi-term nonlinear fractional orders differential equations, *Appl. Numer. Math.* **60**, 788–797 (2010).
- [28] A. M. A. El-Sayed, S. Z. Rida and A. A. M. Arafa, Exact solutions of sometime-fractional biological population models by using generalized differential transform method, *Int. J. Math. Model. Simul. Appl.* **3**, 231–239 (2010).
- [29] M. Du, Z. Wang and H. Hu, Measuring memory with the order of fractional derivative, *Sci. Rep.* **3**, 142–147 (2013).
- [30] A. M. A. El-Sayed, On the existence and stability of positive solution for a nonlinear fractional-order differential equation and some applications, *Alex. J. Math.* **1**, 1–10 (2010).
- [31] C. P. Li and F. R. Zhang, A survey on the stability of fractional differential equations, *Eur. Phys. J. Special Topics* **193**, 27–47 (2011).
- [32] W. Lin, Global existence theory and chaos control of fractional differential equations, *J. Math. Anal. Appl.* **332**, 709–726 (2007).
- [33] T. Sardar, S. Rana, S. Bhattacharya, K. Al-Khaled and J. Chattopadhyay, A generic model for a single strain mosquito-transmitted disease with memory on the host and the vector, *Math. Biosci.* **263**, 18–36 (2015).